

Web Services in US F-1000

Lessons from the Trenches

Dan Decasper

ddd@jibenetworks.com



The Last 9 Months...

200+ F-1000 companies

Overview

- Definition
- State of WS usage
- What are WS used for?
- Challenges
- Fixes
- A word about Jibe Networks
- Future of WS

Attempt at a Definition

- WS are:
 - a) a technology to connect applications
 - b) the next generation CORBA
 - c) services offered to users over the web
 - d) all of the above

- Gartner says:

“Applications which use at least one of either SOAP, UDDI, or WSDL”

The Technologist's View

Tool	Layer	
WSXL	Service User Interface/Presentation	
WSFL	Service Flow	
TPA (Trading Partner Agreement)	Service Agreement	
Static → UDDI or WS Inspection	Service Discovery	Focused delivery or Focused delivery and some unfocused delivery
Direct → UDDI	Service Publication	
WSDL	Service Description -Service Implementation -Service Interface	
WS Security	Secure Messaging	
SOAP	XML Messaging	
HTTP, FTP, SMTP, MQ RMI over IIOP	Transport	

IBM 6/2002



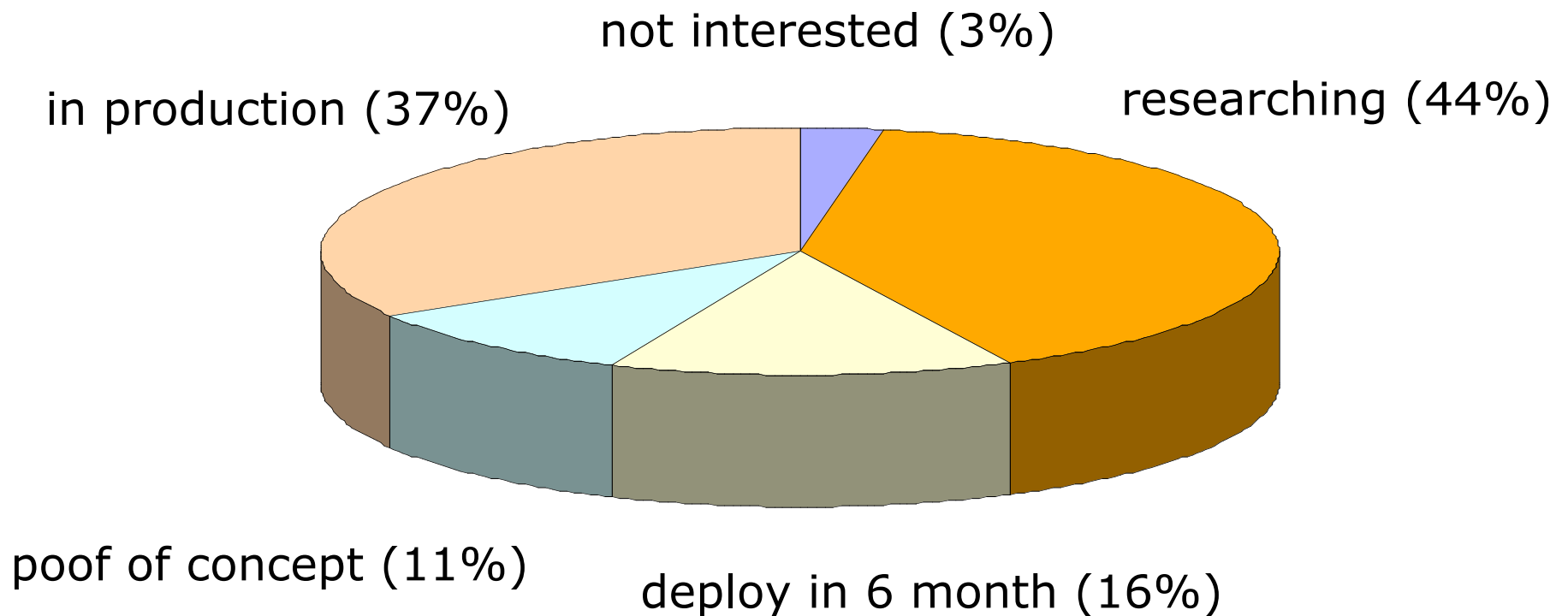
The User's View



- Disconnect between user know-how and technology vendor positioning
- Reminds me of ATM...

State of WS Usage

Among F-500 enterprises



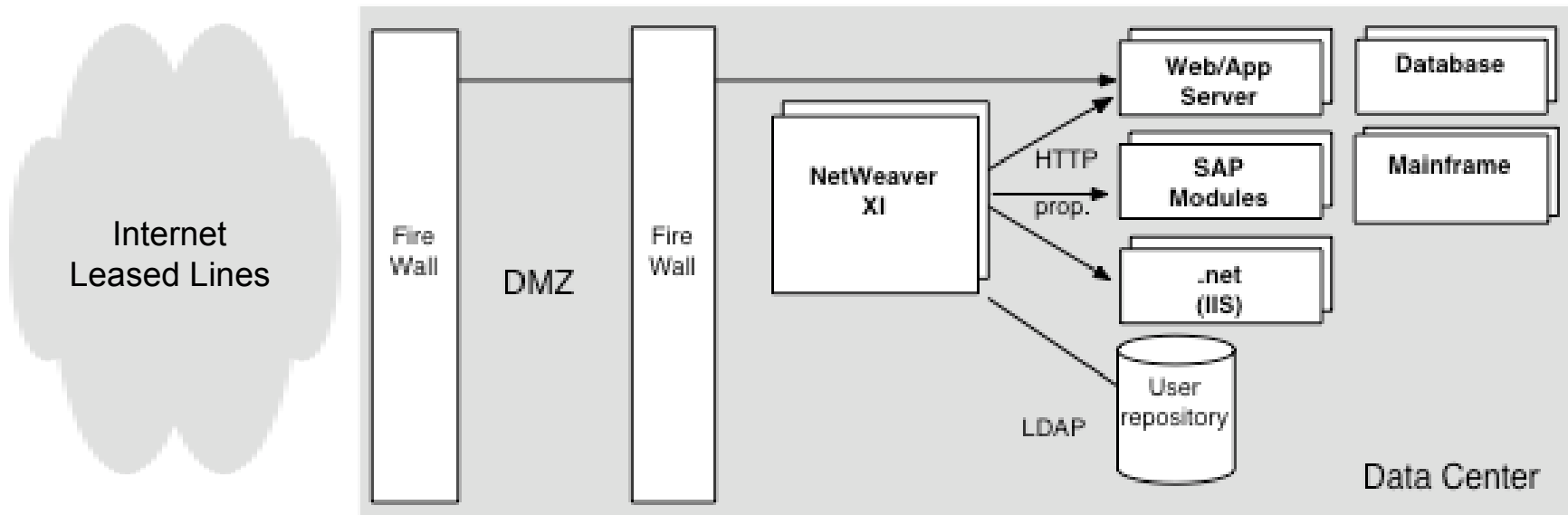
Westbridge 3/2004

Application of WS

- 30% Service-Oriented Architectures
- 28% B-to-B Communication
- 15% Enterprise Application Integration

Sample Applications

- Oil refinery
- Oil services firm
- Bank



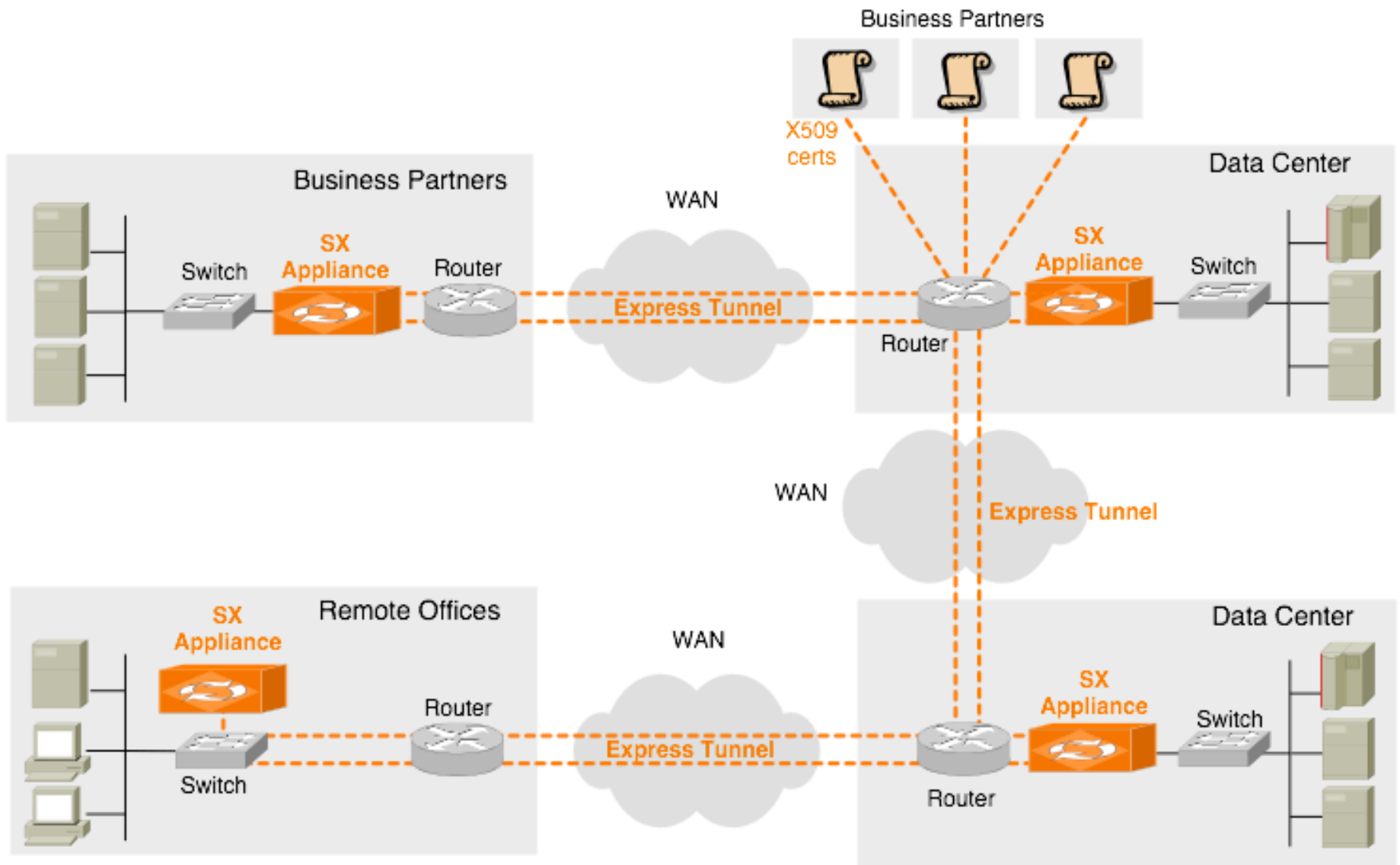
Challenges

- Security
- Management
- Performance
- Reliability

Addressing Challenges

- Security: App Server
XML Firewalls
Certificate Management
ID Management
Home-grown
- Management: App Server
Point products
- Performance: App Server
XML accelerators
Compression devices
Caching devices
- Reliability: App Server
Enterprise service buses

Jibe Networks



Future

- XML: impressive growth
- SOA: questionable
- Abstraction level: raising
Workflow / business process modeling
- Standards: evolving

Summary

- WS today = SOAP + WSDL + UDDI
- Apps: (Modest) SOAs, B2B & EAI
- Challenges: Security, management, performance and reliability
- WS have a very bright future!

Thank you!